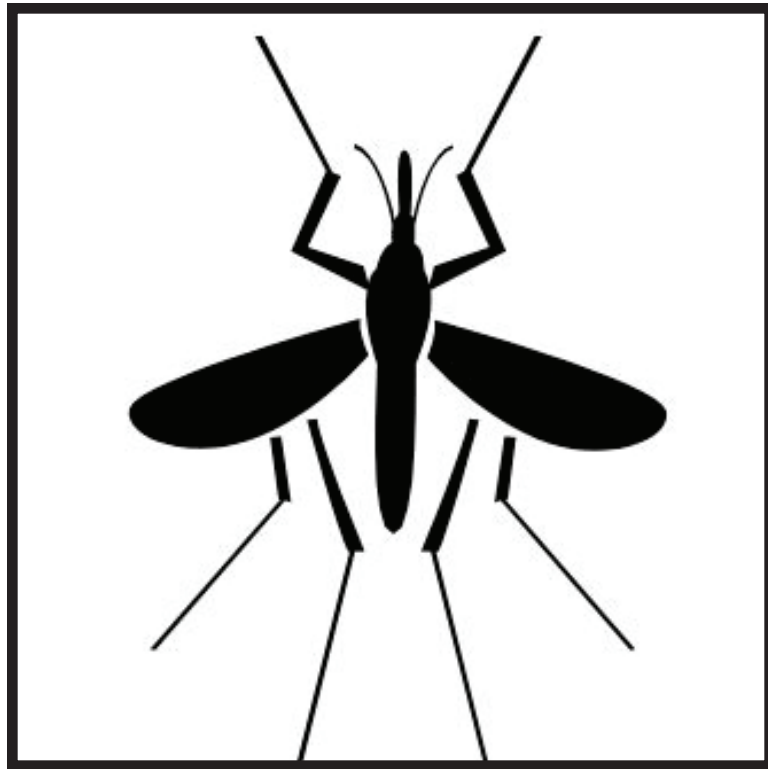


**Human (*H. sapiens*)**

**Diet:** omnivorous

**Population size in wild:** 6.4 billion





**Mosquito (*A. gambiae*)**

**Diet:** human blood

**Population size in wild:** abundant





**Mouse (*M. musculus*)**

**Diet:** omnivorous

**Population size in wild:** abundant





## **Giant Panda**

**Diet:** mostly bamboo

**Population size in wild:** 1600

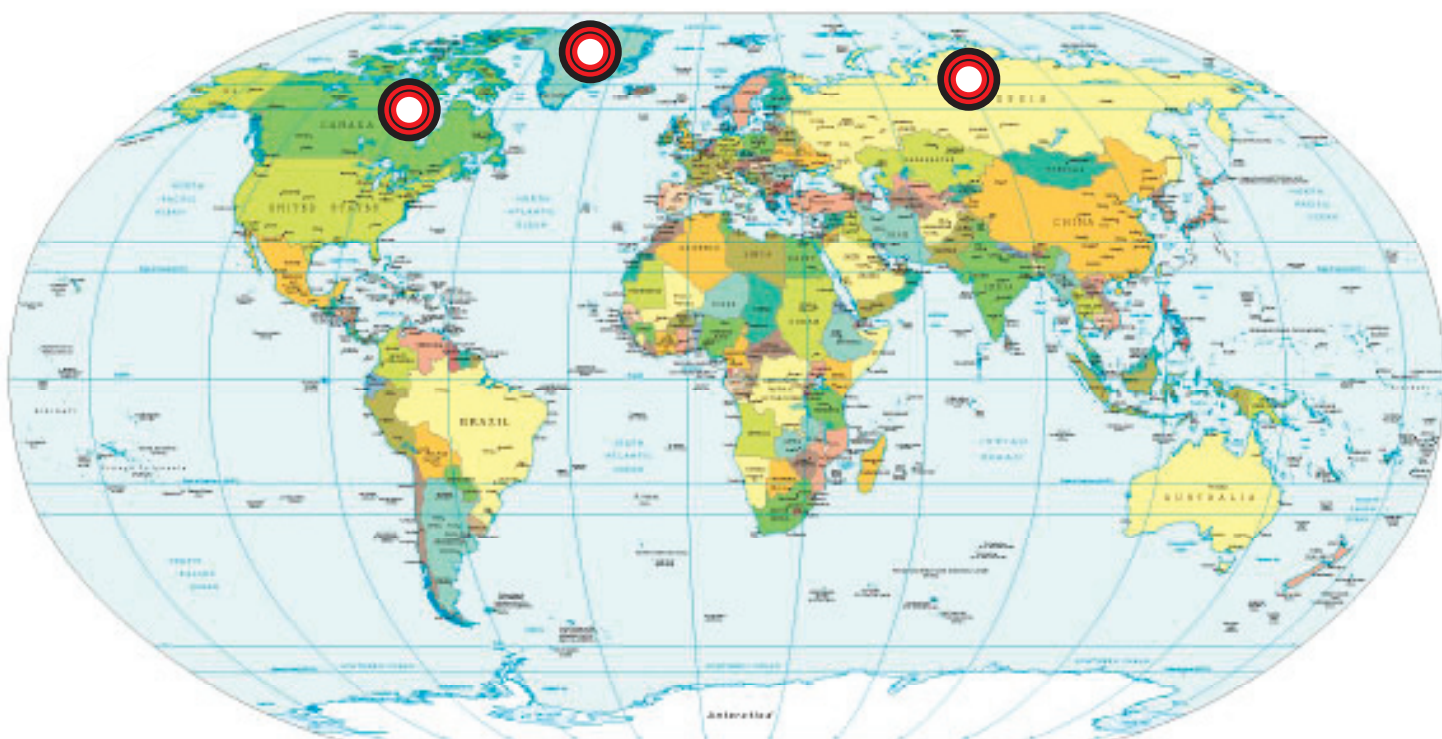




## **Polar Bear**

**Diet:** carnivorous

**Population size in wild:** 20,000-25,000





**Norway spruce (*P. abies*)**

**Diet:** sunlight, water, and soil

**Population size in wild:** abundant





**Mountain frog (*P. kundagungan*)**

**Diet:** insects

**Population size in wild:** small





**Baltimore Oriole (*I. galbula*)**

**Diet:** insects, berries, and nectar

**Population size in wild:** abundant







**Antarctic hairgrass (*D. antarctica*)**

**Diet:** sunlight, water, and soil

**Population size:** abundant on Antarctic peninsula





**Emperor penguin (*H. sapiens*)**

**Diet:** krill (a crustacean)

**Population size in wild:** about 450,000

